



**ESPOO  
ESBO**

## **City of Espoo, Finland Finnish Education Unit**

Kaisu Toivonen, Director of Education  
Merja von Schantz, Head of Student Welfare Services  
Olli Poutiainen, Principal of Vanttilan koulu





ESPOO  
ESBO

# The Helsinki metropolitan area and Uusimaa projects

**Programme to address reform in child and family services (LAPE)**

**The best for the child – Together we are more  
(Espoo, Helsinki, Kauniainen, Kerava, Kirkkonummi, Vantaa)**

**LAPE Uusimaa – Together we are more (Other  
municipalities of the region Uusimaa)**



**When pupils are feeling well,  
they learn better!**





ESPOO  
ESBO

According to the School Health Promotion study conducted by the National Institute for Health and Welfare, most pupils and students in Espoo feel well, like school, have a hobby and at least one friend.





Growing welfare differences and accumulation of disadvantage raise concern.

Many pupils from different cultural backgrounds who have moved to Espoo have experienced loneliness and bullying, even though school bullying as a phenomenon has decreased.

The study clearly indicated that discriminatory bullying occurs during free time and on social media.

## Finland, new regions and Uusimaa



Population in  
Finland  
5.5 million

Uusimaa  
1 668 053  
inhabitants

Helsinki  
metropolitan area  
1.2 million



# Espoo is the second-largest city in Finland

**27.8.1458**

Date of birth

**279,044\***

Population

**165 islands**

**95 lakes**

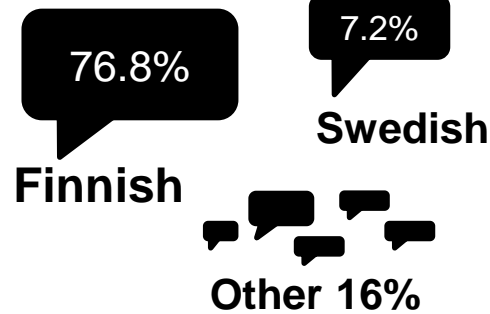
**58 km of coastline**

**Area 528 km<sup>2</sup>**

A natural city

**City of Espoo (ca. 14,000\*),  
Fortum, Nokia, Orion, Tapiola,  
Neste, Aalto University, VTT**

Largest employers

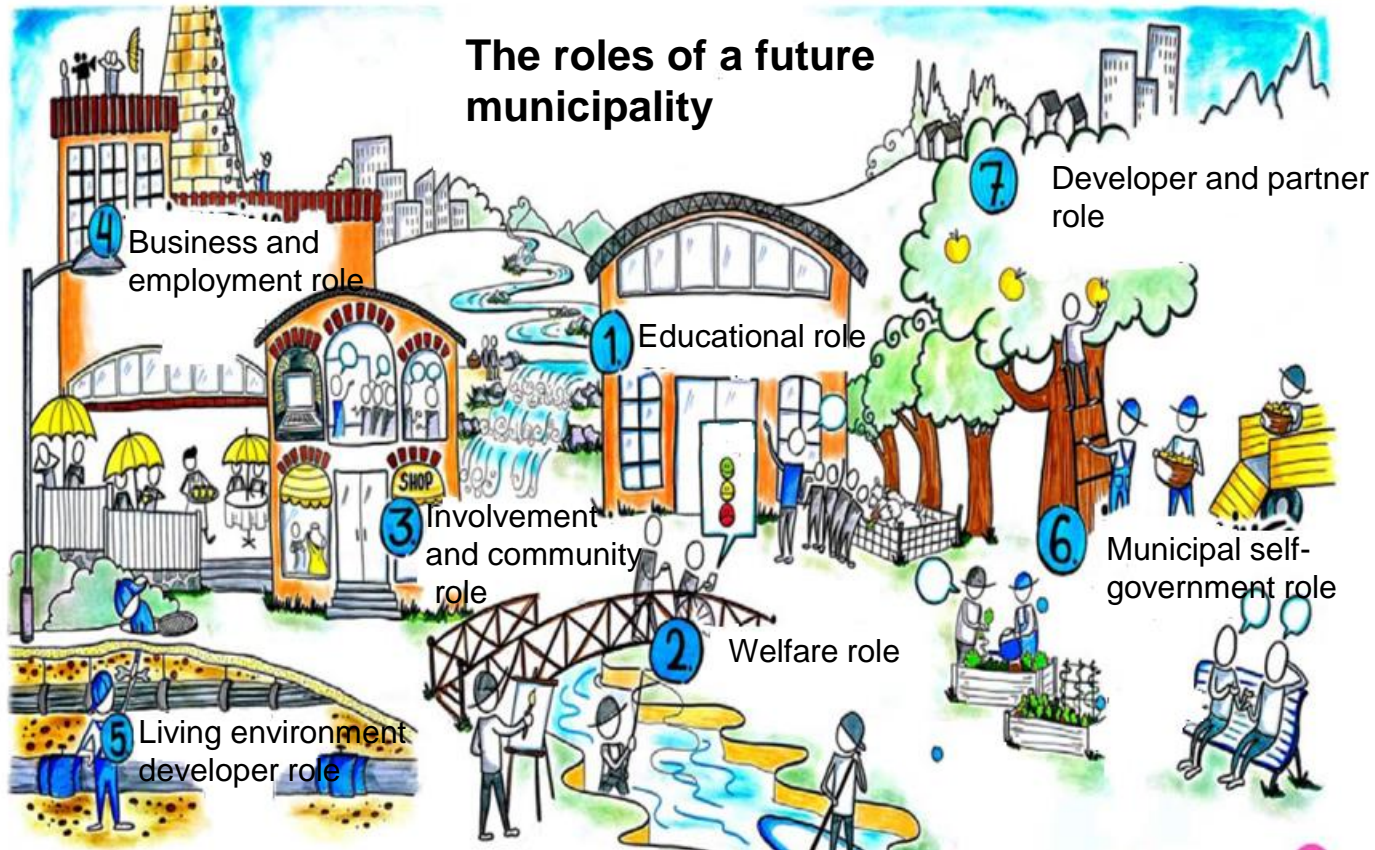


Over 120 different mother tongues





# Future municipality in 2021?







**ESPOO  
ESBO**

## Regional government, health and social services reform: the objectives for state, provinces and municipalities (Hanna Tainio, Association of Finnish Local and Regional Authorities)

Municipalities	<ul style="list-style-type: none"><li>• Regional participation, democracy and business communities</li></ul>	Know-how and education <ul style="list-style-type: none"><li>• Sports and Culture</li><li>• Youth services</li></ul> Health and welfare <ul style="list-style-type: none"><li>• Local business policy</li><li>• Land use and construction</li></ul>
Regions	<ul style="list-style-type: none"><li>• Social and health care</li><li>• Rescue Services</li><li>• Environmental Health Care</li><li>• Regional Development</li><li>• Guidance of regional land use and construction</li></ul>	<ul style="list-style-type: none"><li>• Public employment and business services</li><li>• Transport network and regional public transport network planning</li><li>• Development of the countryside and substitutes for holidays</li></ul>
State	<ul style="list-style-type: none"><li>• Maintenance and development of a constitutionally governed state</li><li>• Securing and evaluation of fundamental rights</li></ul>	<ul style="list-style-type: none"><li>• Tasks of national security</li><li>• National and international tasks</li><li>• Public guardianship</li></ul>



**ESPOO  
ESBO**

## The objectives of the new municipality

### Promoting welfare and health

#### Educational and Cultural Services, e.g.

- Early childhood education
- Pre-primary education, basic education, voluntary additional basic education, morning and afternoon activities
- General upper secondary education
- Vocational education, vocational adult education
- Non-formal adult education, general culture activities, theatres, orchestras, museums
- Sports, youth
- Library and information services

### Promoting regional identity and democracy



#### General sectors, e.g.

- Promoting business
- Supporting associations and civic activity
- Services promoting employment
- Energy supply
- Ports
- Construction and maintenance of information networks

### Promoting vitality

#### Technical services, e.g.

- Land policy
- City planning and land use planning
- Traffic, public transportation and high ways
- Water supply
- Waste disposal
- Energy supply and distribution
- Building control
- Rental housing of the municipality

#### Other services, e.g.

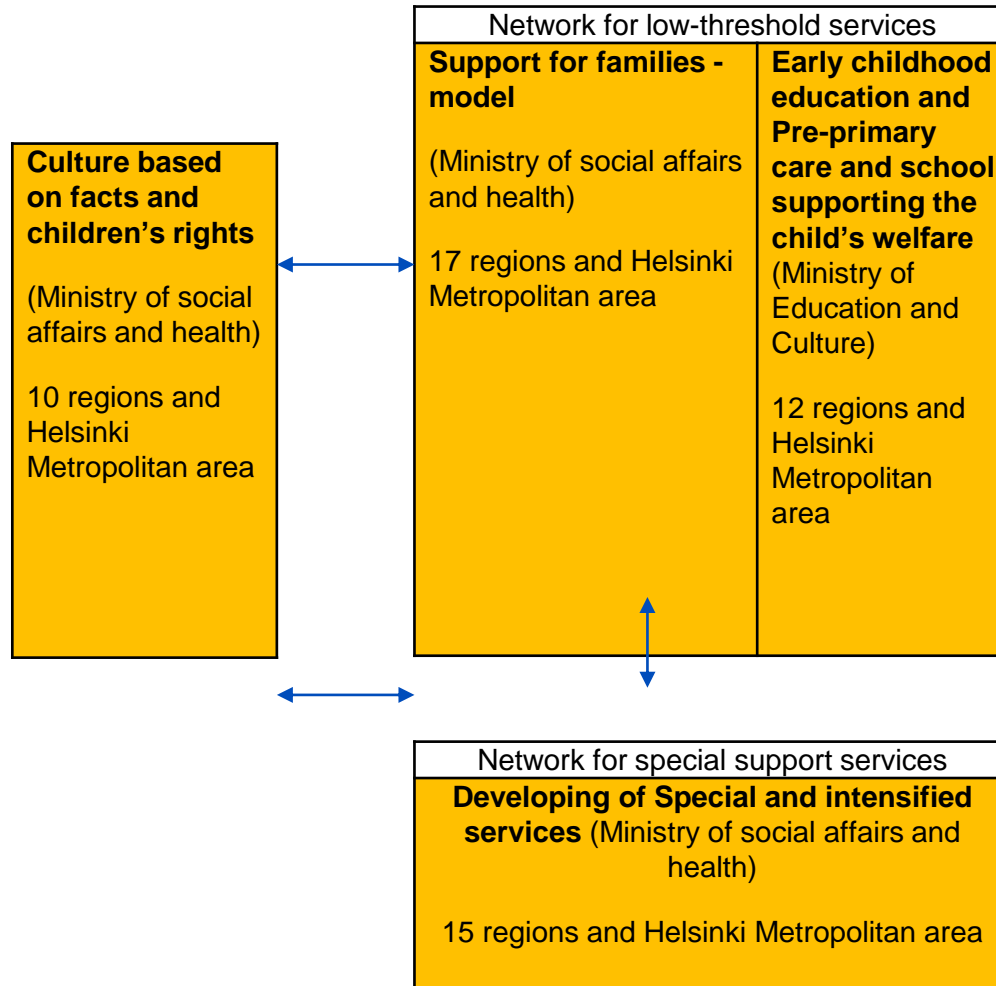
- Country side services
- Obligation to employ long-term unemployed persons



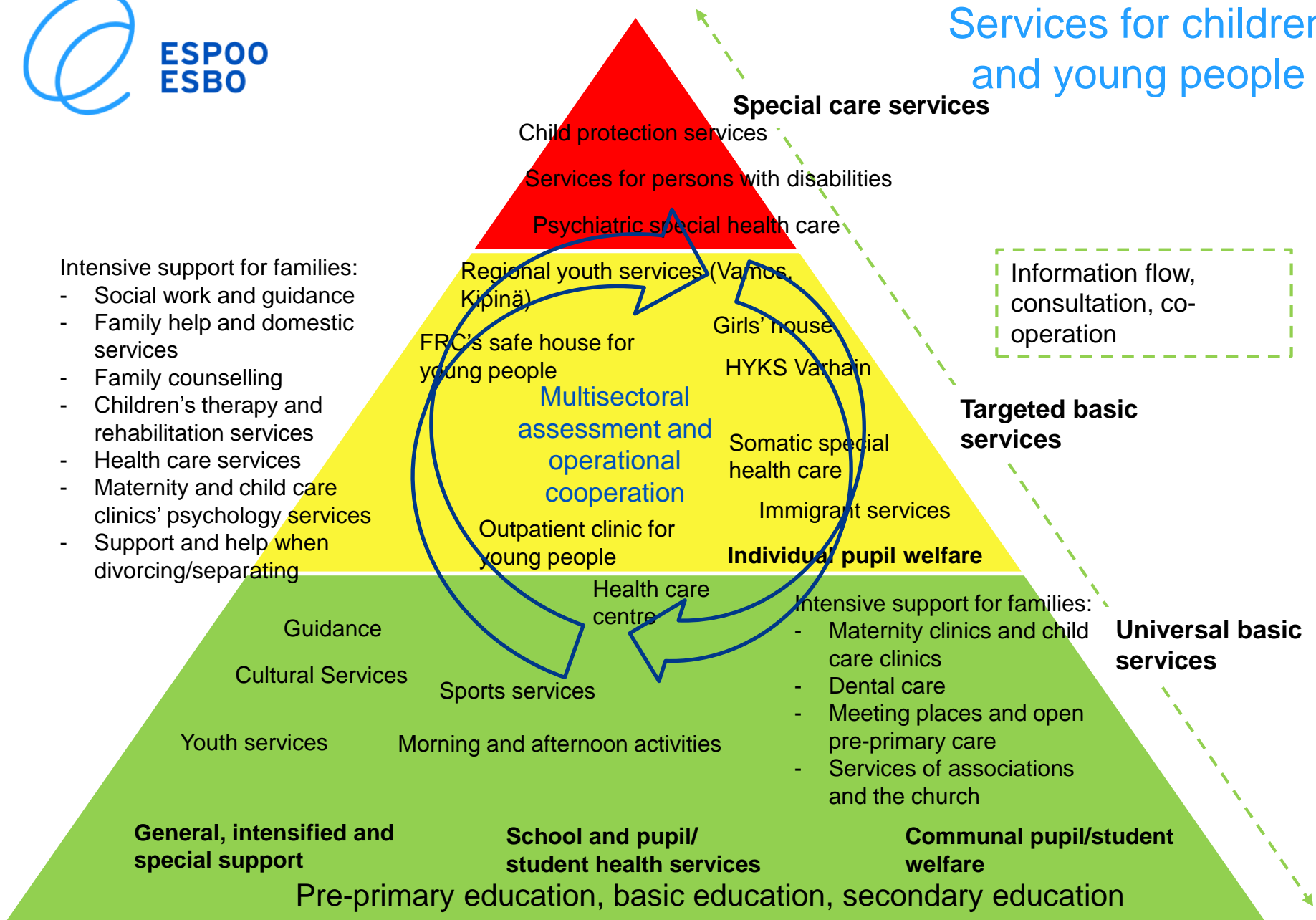
ESPOO  
ESBO

# Development entity of the Program to address reform in child and family services (LAPE)

## LAPE – Regional development project



# Services for children and young people



Intensive support for families:

- Social work and guidance
- Family help and domestic services
- Family counselling
- Children's therapy and rehabilitation services
- Health care services
- Maternity and child care clinics' psychology services
- Support and help when divorcing/separating

Intensive support for families:

- Maternity clinics and child care clinics
- Dental care
- Meeting places and open pre-primary care
- Services of associations and the church