



Plug In 2.0

Facts.

Plug In ^{2.0}



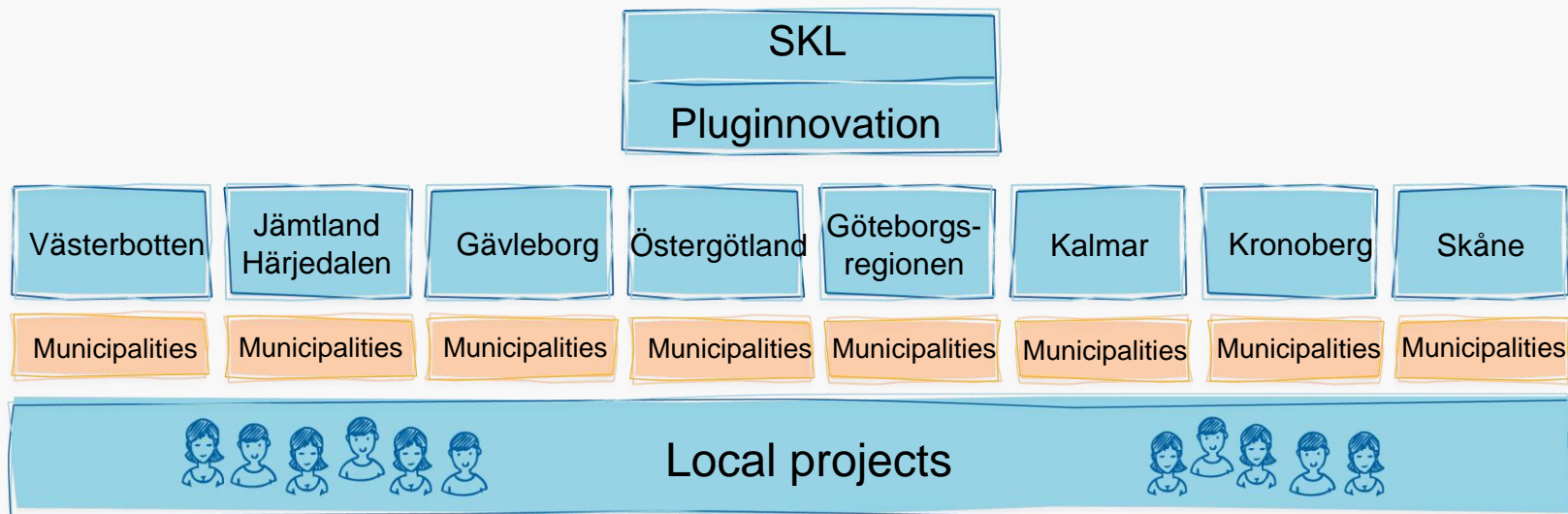
1 out of 8 is not qualified for upper secondary school in Sweden.



1 out of 4 doesn't complete their upper secondary education in 4 years.

Project Architecture.

Plug In ^{2.0}



Plug In in numbers.

- 8 Regions
- 80 Municipalities
- 11 000 participants
- 300 MSEK



Target groups.

Plug In ^{2.0}

1.

Young people in the age of 15-24 years old, studying in Elementary schools, Upper secondary schools or Introduction programs.

2.

Young people in the age of 15-24 years old who have dropt out of school.

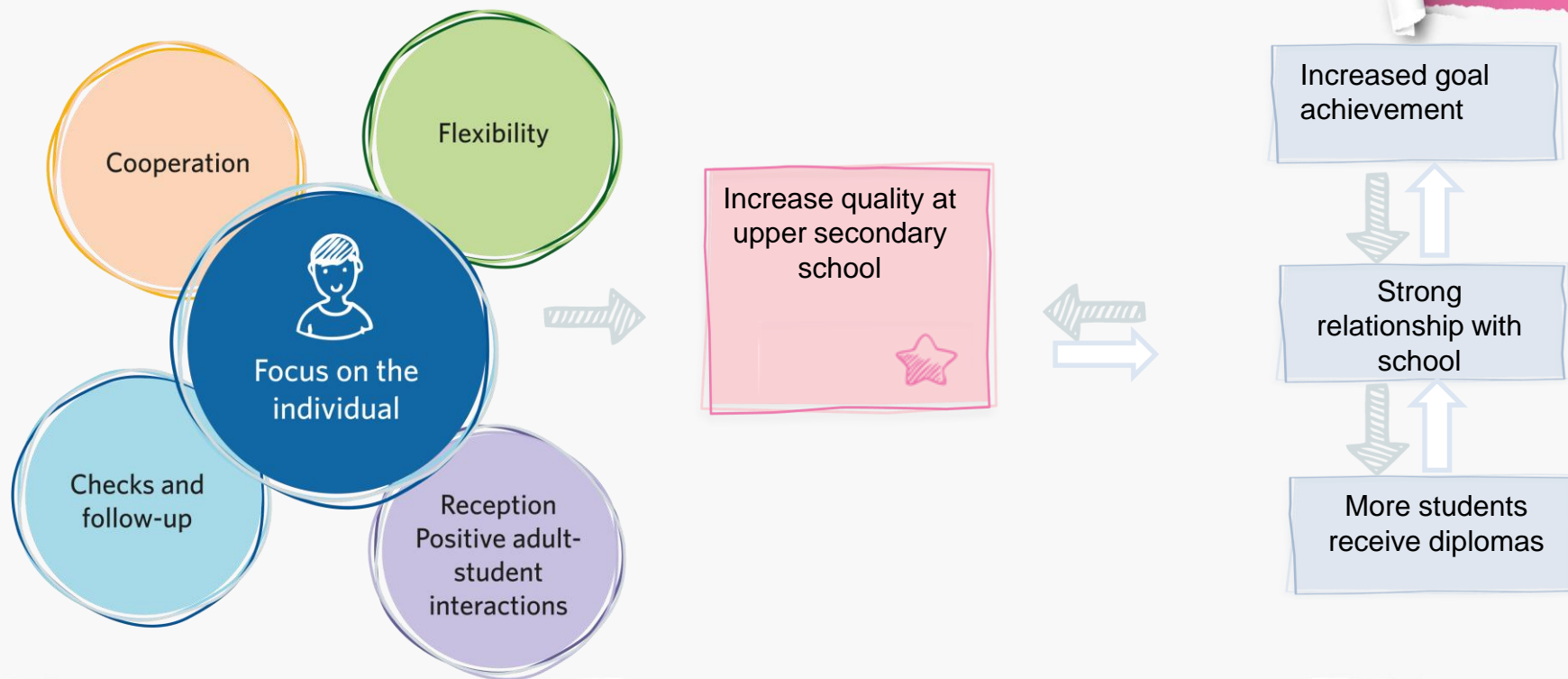
3.

Newly arrived students (Immigrants).



Success Factors.

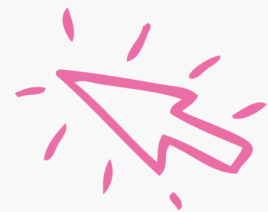
Plug In ^{2.0}



Plug In 2.0 in the Nordic 0-24 project.

Plug In 2.0

- A smaller project within Plug In 2.0.
- A “mini-Plug In” with four municipalities and one region.
- A deepening of the cross-sectorial work developed around young people who have interrupted or risk interrupting their studies.
- Focus on enabling, further developing and intensifying cross-sectoral activities and measures at municipal and regional level.



Participating municipalities and region.

Plug In 2.0

- **Bergs kommun**

- Navigatorcentrum is based on the cooperation between the municipality, national authorities and working life. Focus is to support young people between 16-29 years to find a meaningful occupation.

- **Sandvikens kommun**

- The municipality's labour market unit collaborate with the local school, various municipal services and local employers to support young people to become established on the labour market with motivational activities and guidance.

- **Göteborgs kommun**

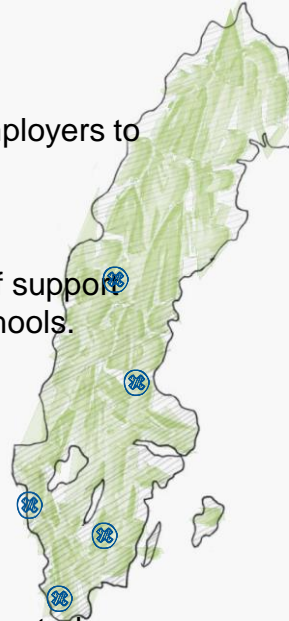
- Vägledningssentrum within the municipality's education unit offers coaching and guidance to pupils in need of support when transferring from elementary school to upper secondary school. They provide routines and methods to schools.

- **Region Kronoberg**

- The regional initiative "Barnens bästa i Kronoberg" aims to strengthening the cooperation and coordination between different professions and sectors working with children and young people.

- **Lunds kommun**

- ComUng is a coordination center of several municipal services and the Swedish Public Employment Service in Lund. Focus is on giving coordinated information, guidance and support to youths who neither work or study.



Thank you!

Gunnar Anderzon
Project Manager
gunnar.anderzon@skl.se

Lovisa Fransson
Project Coordinator
lovisa.fransson@skl.se