



# Tasiilaq, The Greenlandic National Case

Nordic 0-24, project seminar  
Acting Director Helene Horsbrugh  
Head of section Sussi Wille Broge  
Oslo November 2017



# Kalaallit Nunaat Greenland



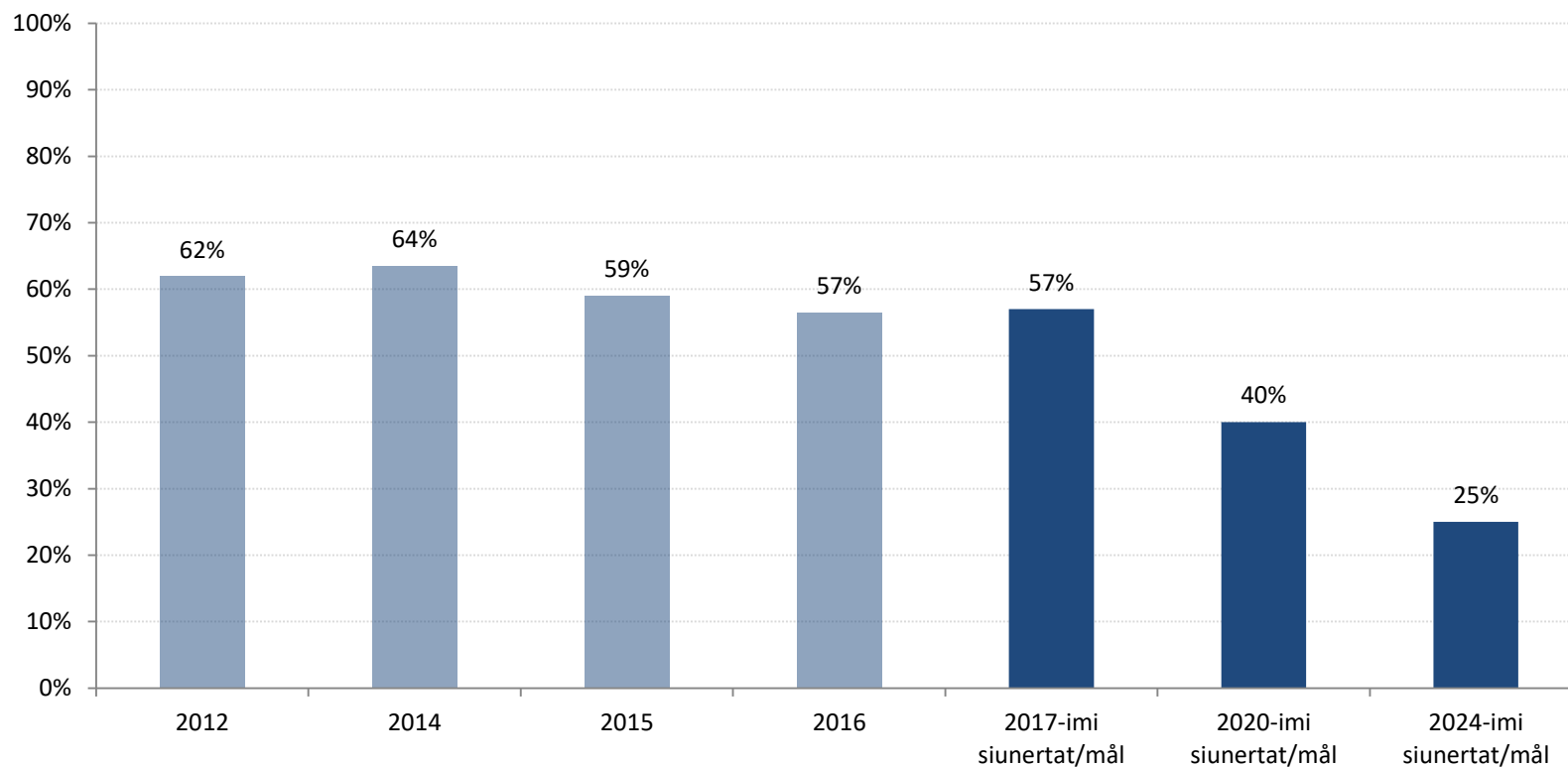
- 2,166,086 km<sup>2</sup>
- Population 55,860 (2017)
- Danish colony until 1953
- Home Rule 1979
- Self - Government 2009



# What is the challenges in your region?

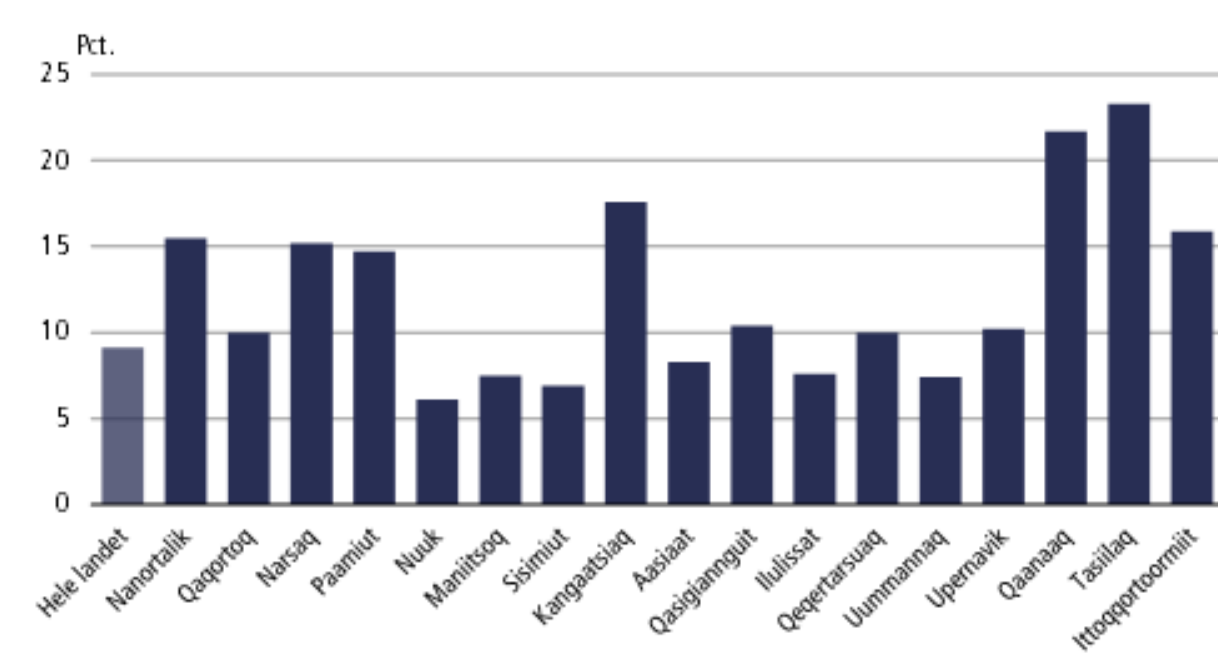


# Citizens between the age 16-18 outside education





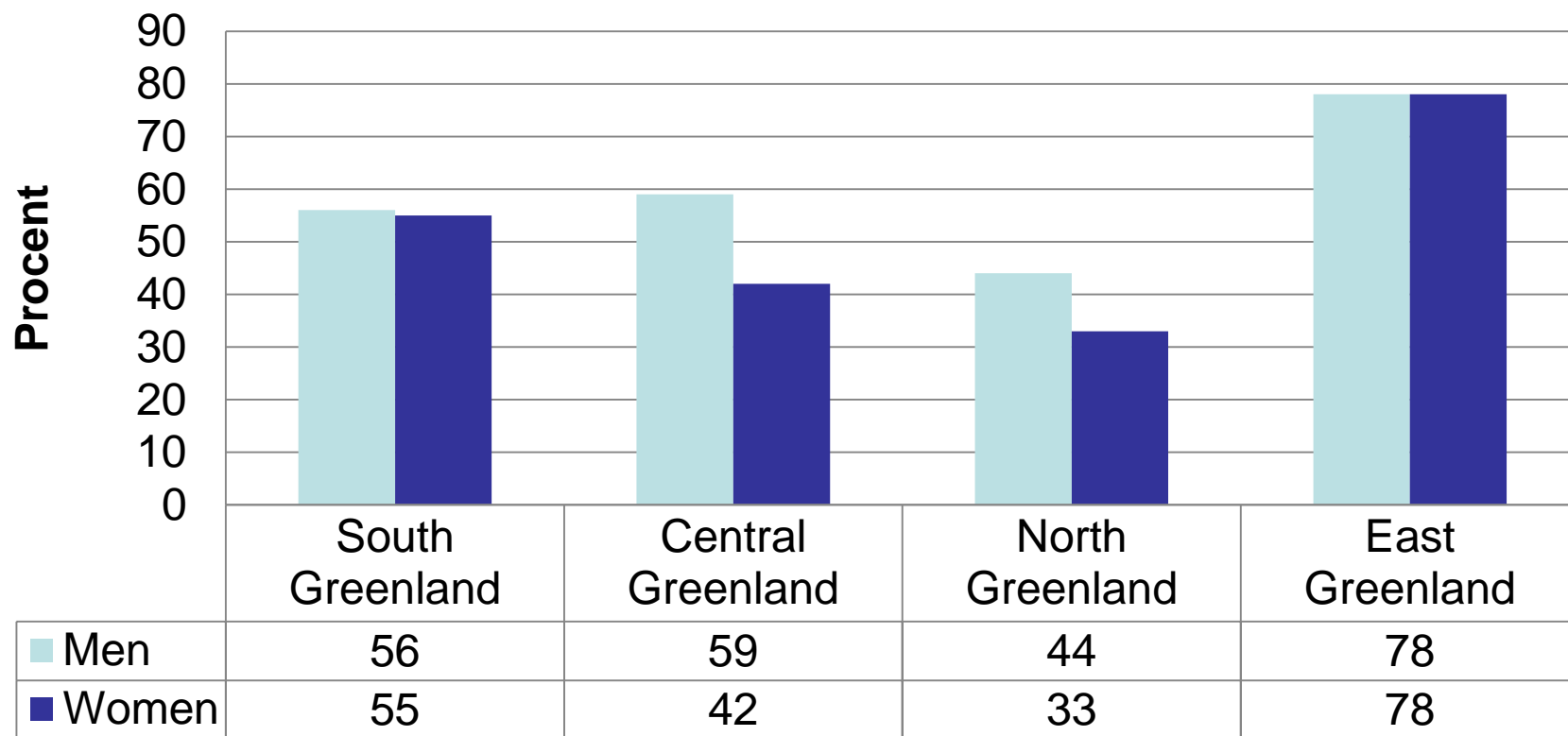
# Unemployment rate 2015



# Inuuneritta / Public Health Program (2014)



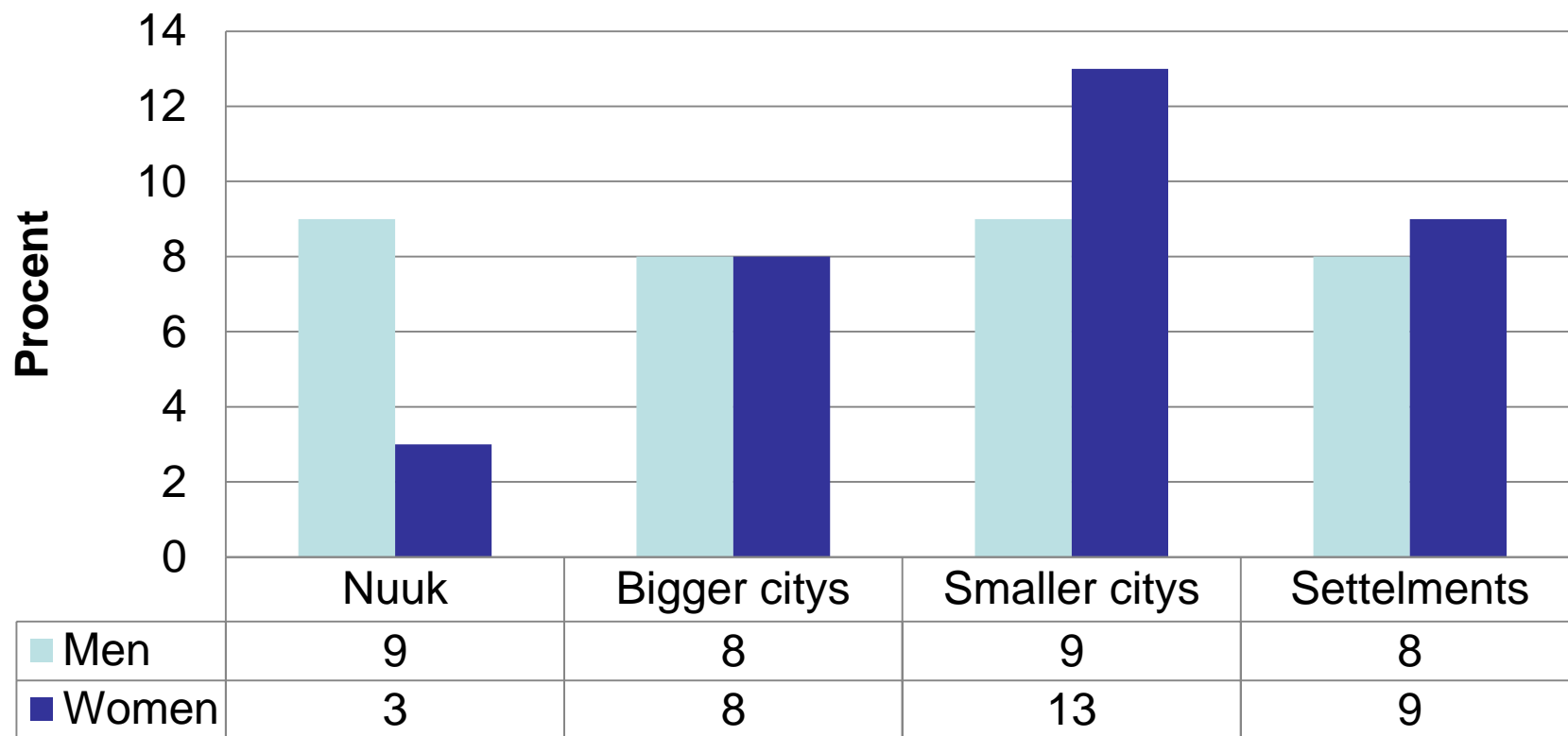
## Binge drinking



# Inuuneritta / Public Health Program (2014)



## Suicidal thoughts







# The year of the children 2016



- Children's welfare
- Abuse
- Rights
- Child neglect
- Education

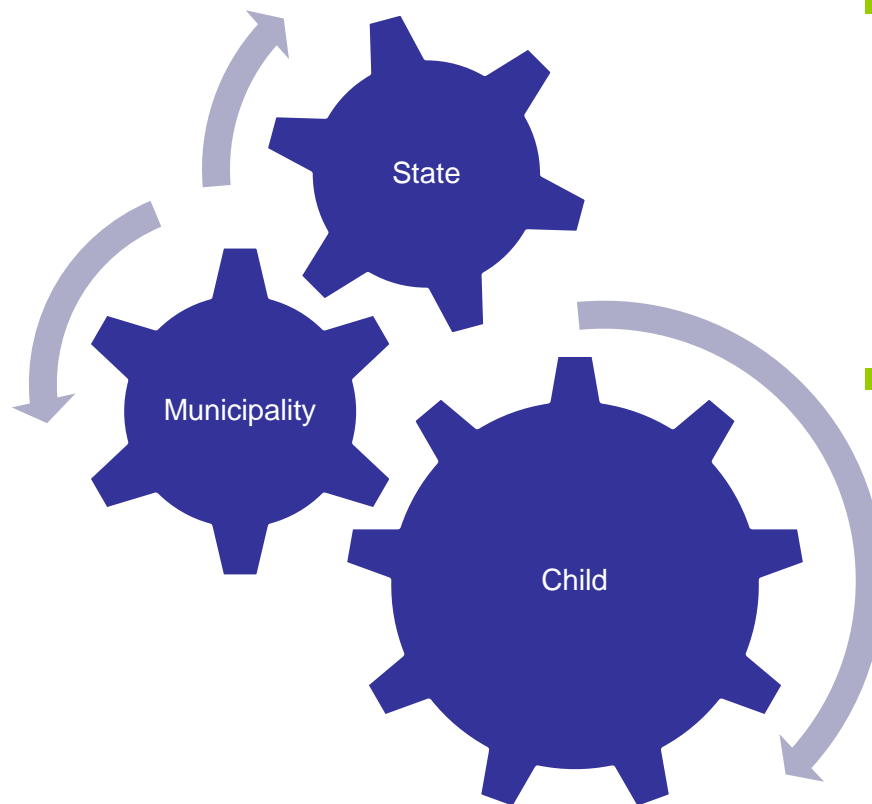


# Local tragedies in Tasiilaq

- November 2015
  - Piteraq (Hurricane)
- First week of January 2016
  - 2 suicides
  - 1 murder



# Kommuneqarfik Sermersooq & Naalakkersuisut



- Establishment cooperation between municipality and government
- Target group – families
  - Prevention
  - Treatment

# **Children and families in Tasiilaq, Kommuneqarfik Sermersooq**



KOMMUNEQARFIK SERMERSOOQ



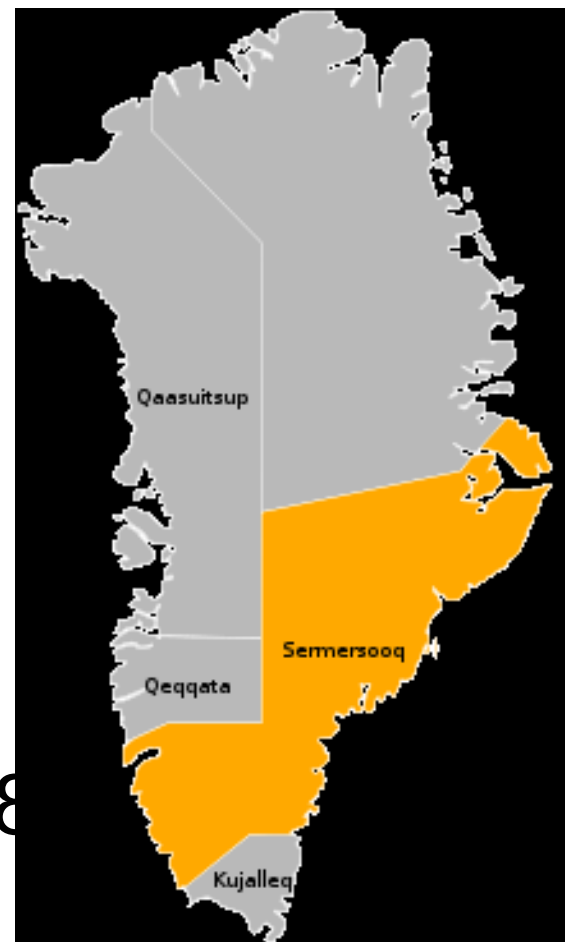
# Content

- Background information about Kommuneqarfik Sermersooq, specifically Tasiilaq
- The development plan for children and families
- Possible solutions to challenges in Tasiilaq



# Kommuneqarfik Sermersooq

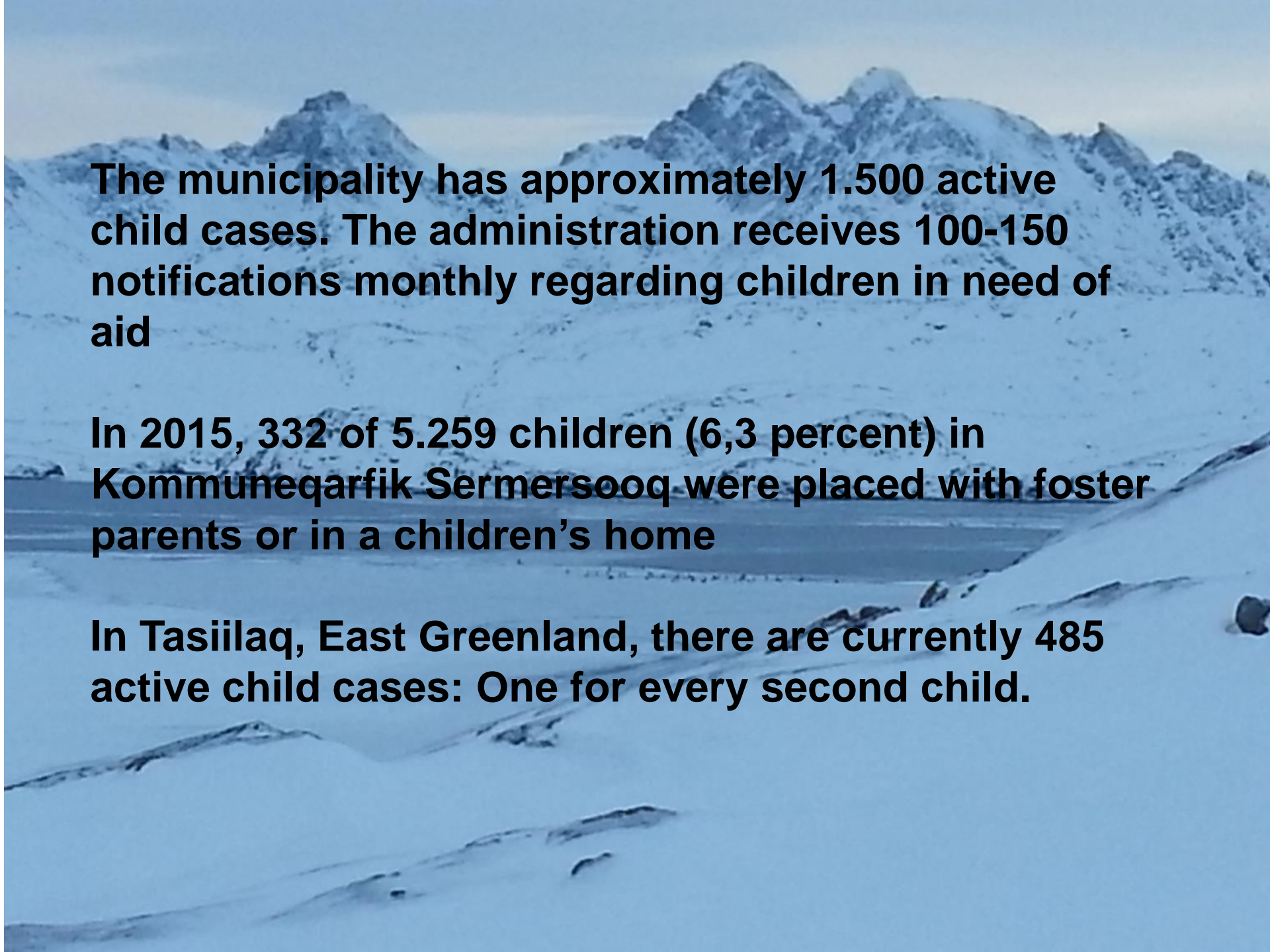
- Area 635.600 km<sup>2</sup>  
(Denmark 43.098 km<sup>2</sup>,  
Sweden 447.435 km<sup>2</sup> )
- About to become the  
World's largest municipality,  
Area wise (1st January 2018)



KOMMUNEQARFIK SERMERSOOQ







**The municipality has approximately 1.500 active child cases. The administration receives 100-150 notifications monthly regarding children in need of aid**

**In 2015, 332 of 5.259 children (6,3 percent) in Kommuneqarfik Sermersooq were placed with foster parents or in a children's home**

**In Tasiilaq, East Greenland, there are currently 485 active child cases: One for every second child.**

# Some statistics...

- 2000 inhabitants, hereof 1000 children
- 485 child cases
- 54 cases of violence (including 1 murder and 3 attempts to murder), 29 cases of rape, and 30 cases of sexual abuse of children reported to the Police in 2016





# Some quotes

- "The law doesn't apply here" (Greenlandic artist)
- "According to my experience, seven out of 10 children are severely neglected. Six out of 10 children have been sexually abused" (teacher in public school)
- "The majority of the families are dysfunctional" (social worker)



# Burning platform



KOMMUNEQARFIK SERMERSOOQ



# *Development Plan MI 2017-2020*



KOMMUNEQARFIK SERMERSOOQ



# Way forward for Tasiilaq?

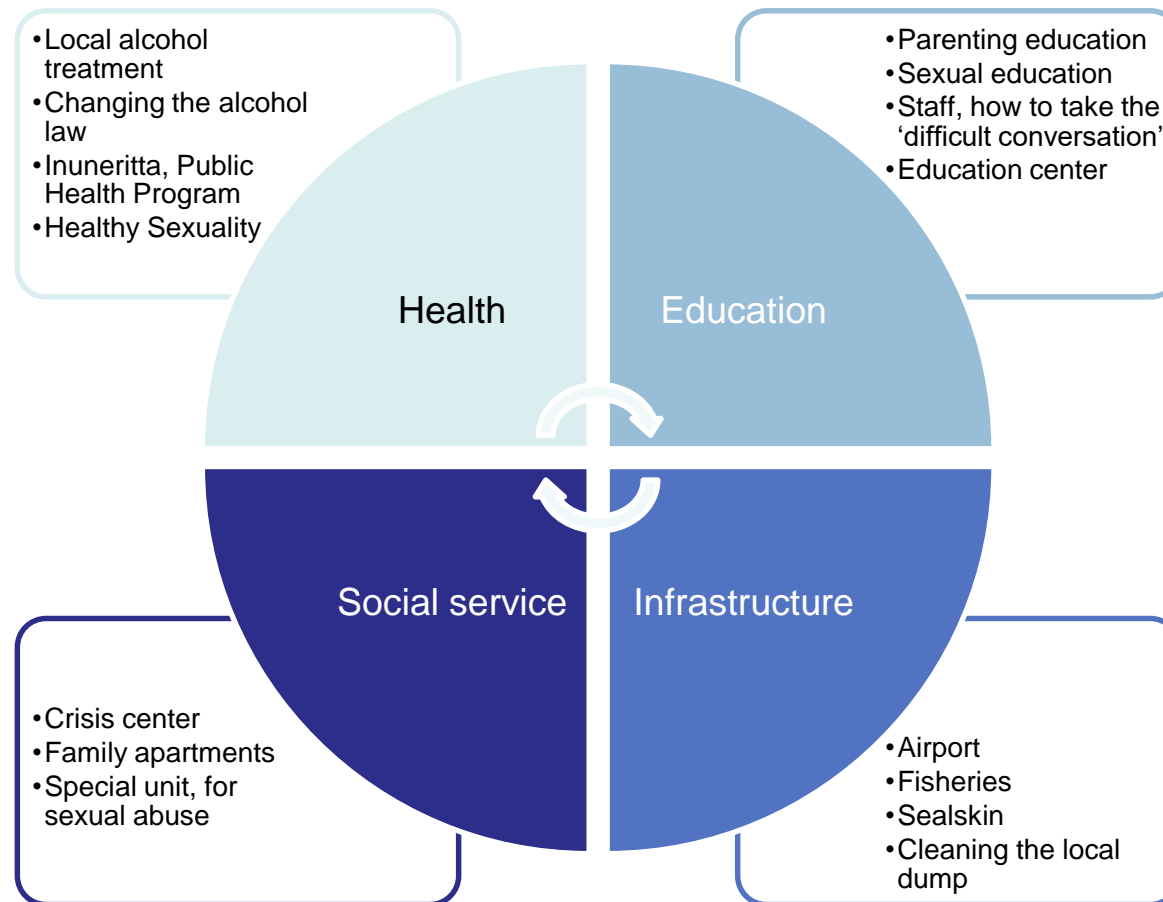
## Possible solutions on community level

- Build broad alliances across sectors and institutions?
- Build on local resources: Mobilize the community?
- Create life opportunities: Occupation and education?
- Use community rehabilitation rather than individual therapy?





# Initiatives





# Questions and comments?



KOMMUNEQARFIK SERMERSOOQ



